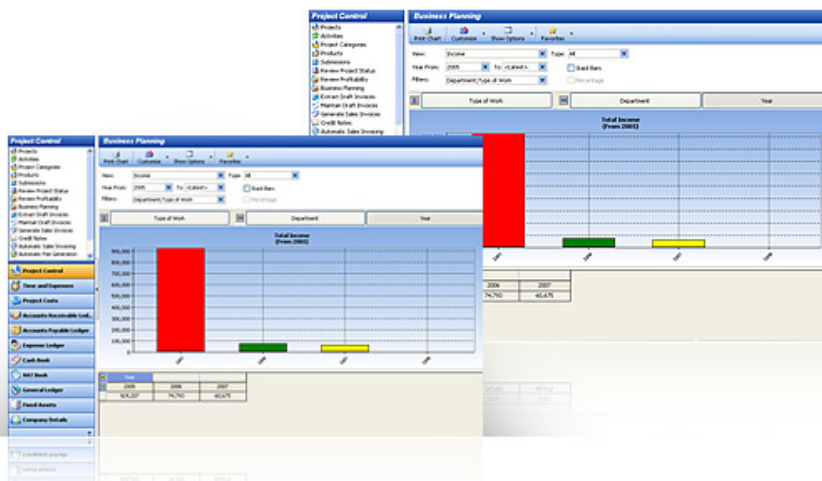




**Professional services delivered to a high standard**

## BUSINESS PLANNING fact sheet

## SKYENTERPRISE software



Business Planning forms part of the fully integrated SkyEnterprise system. For maximum potential, use with Project Management and Financials (fact sheets available on Skynet website).

### Adaptable software for your current and future needs:

- ▶ Use in any industry and configure to your specifications.
- ▶ System is multi-company and multi-currency
- ▶ System is modular so choose which modules are suitable for you. Add further modules as and when you are ready.
- ▶ Purchase licences to meet your needs now, then add more licences later as necessary.
- ▶ Control user-rights to the system to minimise error.

### Efficient, cost-effective, responsive software, providing huge business benefits:

- ▶ Import/Export data function
- ▶ Email reminders for any tasks
- ▶ Wizards & help-text for intuitive use.

### Dynamic integrated e-business solutions which optimise Microsoft technologies:

- ▶ Fully integrated with other modules in SkyEnterprise.

### In-depth analysis tools, analysing the management information you need, the way you need it:

- ▶ Grids and graphs available for analysis – fully interactive
- ▶ Export to Microsoft excel for greater flexibility

## FEATURES of Business Planning

- ▶ View and analyse business trends based on your financial/project data
- ▶ Grids and graphs available for presenting information
- ▶ Export facility to Microsoft excel
- ▶ Fully interactive so data and views can be changed according to your user-definable classifications, and your comparison preferences

## **SkyEnterprise core Modules**

- ▶ Time & Expense
- ▶ Project Management
- ▶ Financials
- ▶ Payroll
- ▶ Human Resources

## **Additional Modules**

- ▶ Tender Tracking/Estimates
- ▶ Resource Planning
- ▶ Business Planning